



Lean on Enrail®

We've put together a comprehensive railing program that has been rigorously tested and certified for safety and quality. We offer three railing styles, each with several options for height, span, and color.

Enrail vinyl railing is manufactured utilizing a precise combination of components that provides both the stylish design and higher performance you've been looking for.

We've developed a low-maintenance railing system that has great architectural appeal for today's homes, and long-lasting durability that will keep Enrail beautiful for decades to come.

Enrail vinyl railing stands tall in most any harsh weather conditions. Low maintenance means virtually no maintenance – with Enrail, there's never any rotting, warping or chipping - and there's no need for painting, ever again.

Enrail®



WE CRACKED THE CODE

CCRR-0107 AC 174/AC 10 Code Approved Railing

- Code approved not just code compliant, feel secure and stylish
- Boxed railing system includes all necessary components
- Rails are aluminum reinforced for extra strength
- Complimentary or contrasting colors to match our Endeck® decking
- Limited lifetime warranty
- 6', 8', and 10' lengths and 36" and 42" heights are available

Our Enrail PVC Railing System has made it through some rigorous testing, meeting stringent 3rd party audit requirements for your safety, and we haven't sacrificed any architectural appeal along the way. The Enrail railing system is engineered to meet all the code requirements as well as withstand the harshest of weather conditions and is approved for single and multi-family dwellings and residential applications.



CCRR-0107

The testing facility we chose is well known, and has been pushing our fencing and railing programs to the breaking point for a long time. In fact, for a quarter of a century, ATI has been at the forefront of comprehensive testing services for building envelopes. ATI is accredited by the International Accreditation Services (IAS), ANSI, and the State of Florida Building Commission as a third party quality assurance entity.

It means we've been put to the ultimate test and passed with flying colors.



Enrail offers a variety of styles—

- TWO HEIGHTS – 36" and 42"
- THREE SPANS – 6', 8' and 10' (200 SERIES)
- TWO FOOTBLOCK MOUNTING STYLES
- THREE BRACKETS – zinc, polycarbonate and PVC
- TWO PICKETS – straight 1.375" and 1.5"
- THREE COLORS – white, tan, and khaki

Our Enrail Railing System utilizes aluminum reinforcements for maximum strength and structural integrity



7167 Old Kings Road North
Jacksonville, FL 32219
Phone 888-329-7428
www.enduris.com



EE14 5/14 15m

We Cracked the Code
Code APPROVED, not just code compliant



Enrail®, Code-Approved PVC Railing by Enduris!

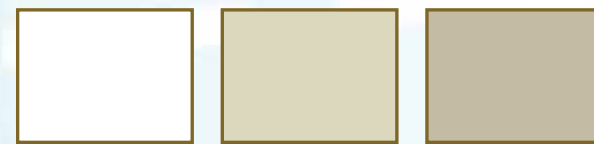
Enrail Vinyl Railing Systems make the perfect accompaniment to your home's front porch, deck or balcony.

Go on and lean on it – Enrail is durable, sturdy and safe.

PVC Vinyl railing from Enrail is more than just durable, sturdy and safe. With three of the most popular rail styles and a variety of heights and spans, Enrail has the perfect railing to complement your balcony, decking, or porch.

We offer several options of railing, mounting brackets and colors, so you can match or complement your home's architectural style. It looks great paired with capped cellular, composite, vinyl or wood decking, or a concrete front porch. It's a wonderful replacement for old, rotten wood – Enrail is constructed of smooth PVC, so you'll never have to worry about splinters, warping or weathering. Maintenance couldn't be easier; just a spray with your garden hose or an occasional wipe-down with a damp cloth will do the trick.

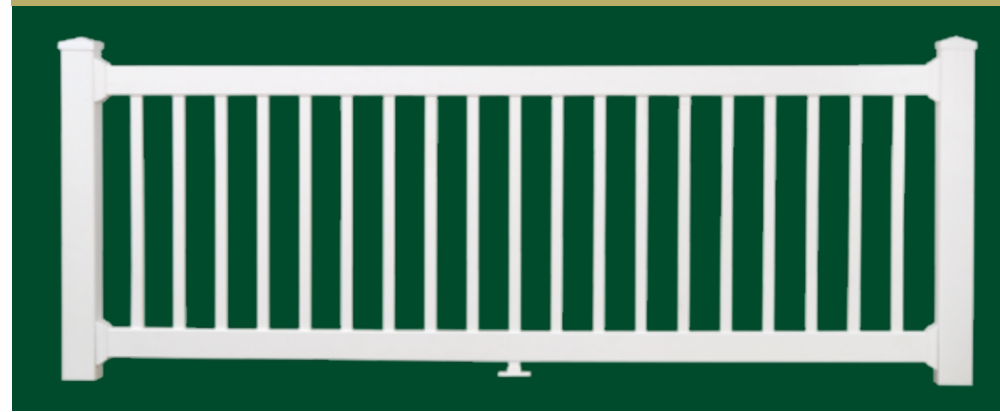
Enrail vinyl railing withstands even the harshest weather conditions – with Enrail, there's never any rotting, warping, molding or chipping.



Colors:
White, Tan, or Khaki



SERIES 100: 2" x 3.5" Rail Profile



SERIES 100

Strength and simplicity – that's our 2" x 3.5" railing. This design is straightforward and contemporary, and works well with masonry, vinyl siding or wood clapboard. Spans to 6' and 8'.



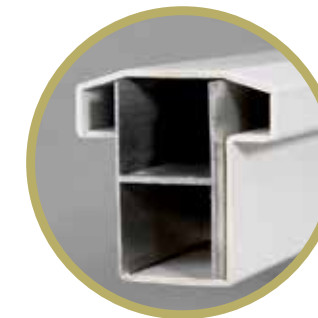
Enrail PVC railing is reinforced with aluminum for the ultimate in style and long term performance.

SERIES 200: T-Rail Profile

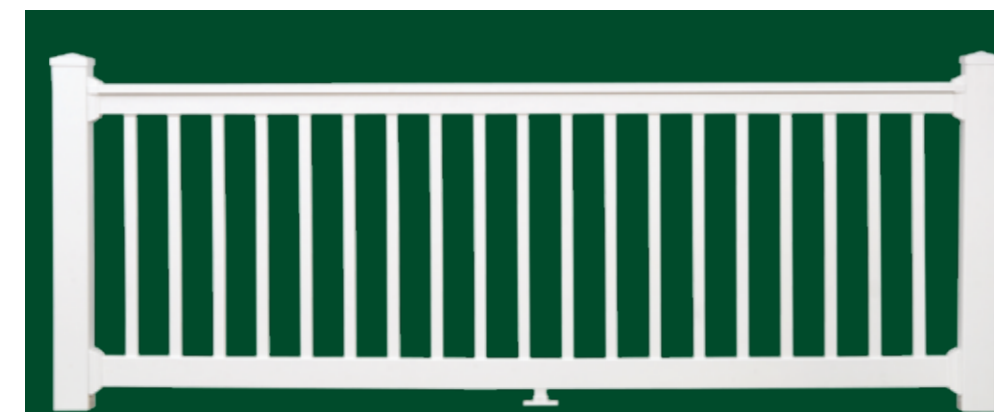


SERIES 200

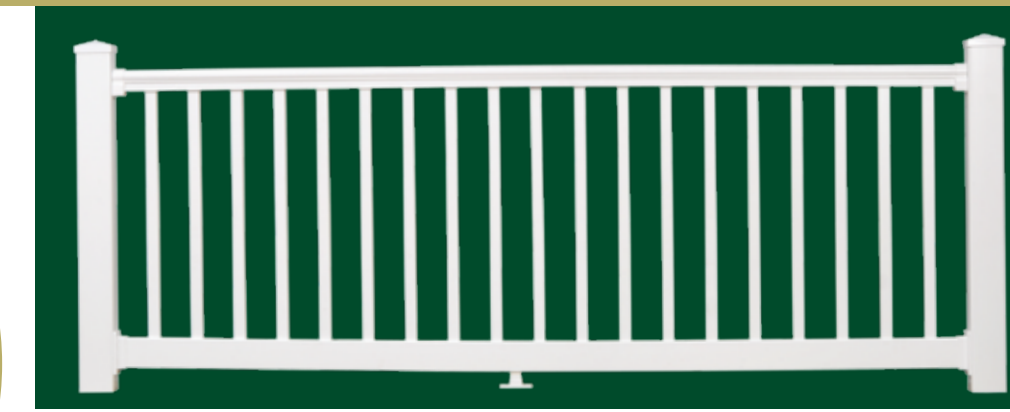
The distinct lines of our T-Rail system add real architectural appeal to any style of residence. Spans to 6', 8' and 10'.



For a resilient and beautiful addition to any porch, balcony, or walkway, Enrail railing is reinforced with aluminum for maximum strength and peace of mind.

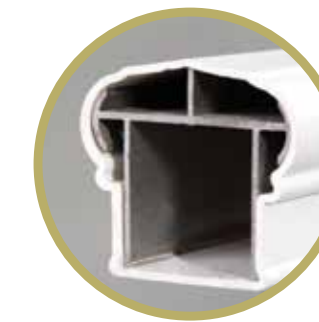


SERIES 300: Small Contour Rail Profile



SERIES 300

Easier to grip for smaller hands, the soft curves of our Small Contour rail system work to conceal the amazing strength inside. Spans to 6' and 8'.



Distinctive designs, crafted to last, with aluminum inserts for structural ruggedness.